

# **METEK**<sup>®</sup>

**HDR POWER SYSTEMS**



## ***THE PREFERRED SOURCE***

***for Power Controls and Systems, Power Supplies  
and Panelboards/Switchboards***

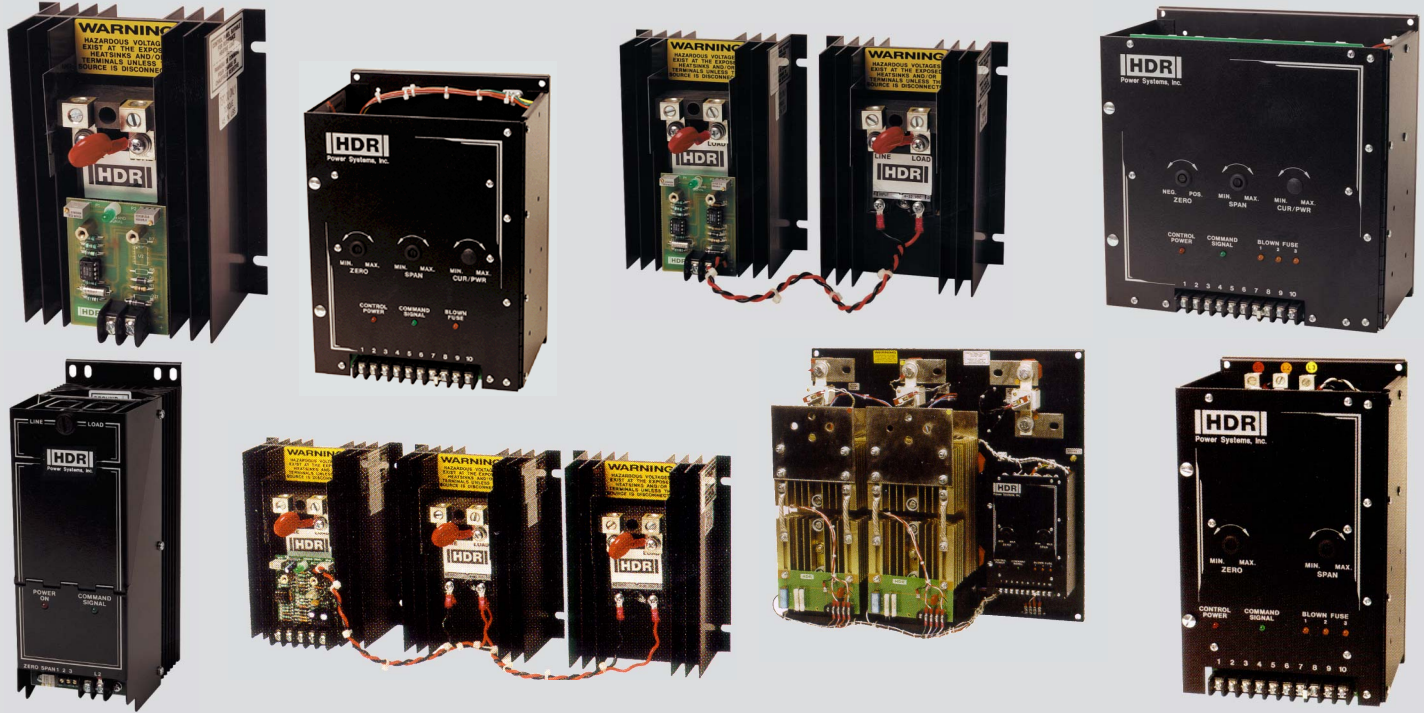
3563 Interchange Road  
Columbus, OH 43204-1400

Toll Free: 1-888-PWR-CNTL  
1-888-797-2685 Fax: 1-614-308-5506

Web: [www.hdrpower.com](http://www.hdrpower.com)

# Introduction

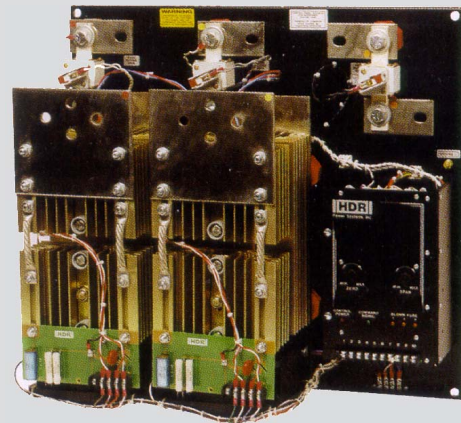
AMETEK HDR Power Systems has long enjoyed the reputation as a world class manufacturer of power electronic equipment for specific markets and special applications. We earned this reputation, and built our company, on a philosophy of long term commitment to product quality, service, and most of all, our client's success. It is our dedication to our client's continued satisfaction that gained us the title of "The Preferred Source."



Our SCR Power Controls are high quality, industrial grade products designed to operate reliably for many years in process environments. Pictured here are typical zero and phase-fired, single-phase and three-phase controls. HDR offers one of the broadest lines available—from 15-1200 amperes for all standard voltages.

## SCR Power Controls

- UL/cUL Listed, CSA Certified, CE Compliant
- Voltages to 600 Vac
- Currents: 15A to 1200A
- Single & Three Phase
- Zero & Phase Fired
- Standard & Custom Designs
- Diagnostic Indicators
- Plug-in Options
- 5 Year "No Hassle" Warranty
- Shortest lead time in the Industry
- High Power Density - Up to 6 Controllers in a single package
- PowerSelect "Design Software"
- Typical Applications Include:
  - ◆ Kilns/Ovens
  - ◆ Environmental Chambers
  - ◆ Extruders
  - ◆ Molding Equipment
  - ◆ Autoclaves
  - ◆ Furnaces
  - ◆ Dryers



## ***Custom Engineered***

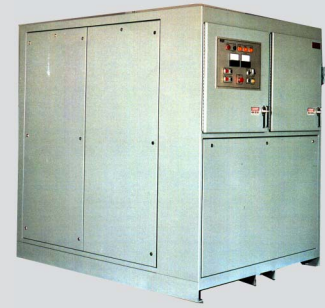
AMETEK HDR Power Systems' ability to provide custom engineered solutions is enhanced by our highly experienced technical staff of design experts working with our powerful CAD system. It is the primary purpose of our design department to reduce the hours spent on engineering and manufacturing drawings, while at the same time optimizing our ability to modify and customize to our client's requirements. The speed and accuracy of HDR's design expertise results in faster manufacturing times with fewer revisions and less rework.

## ***Power Supplies***

- Plasma Arc Heating or Melting
- DC Sputtering
- Crystal Growing/pulling
- Glass/fiberglass Melting or Boosting
- DC Plating and Anodizing
- Electrochemical Rectifier
- Plasma Deposition
- Ceramic Melting
- Semi-Conductor Manufacturing
- Typical User Specifications:
  - ◆ Input Voltages to 15 kV, 50/60 HZ Single or Three Phase
  - ◆ AC or DC Outputs
  - ◆ 6 or 12 Pulse
  - ◆ Input/output Switchgear
  - ◆ NEMA 1 or NEMA 12 Enclosures
  - ◆ Convection, Forced-air or Water Cooling
  - ◆ Instrumentation

## ***Fusible Panelboards***

- Fast, semi-conductor (current limiting) fuses sub-cycle fault clearing
- Flexible configuration enables up to 30 amperes per circuit
- Blown fuse indicators
- UL Listed
- Properly coordinated fuse/breaker clearing times for critical UPS and Inverter applications
- Lockable, secure door to restrict unauthorized access
- All dead-front construction
- UltraSafe fuse holder
- Suitable for solid-state load protection
- Accommodates all standard midsize fuses
- Provides both high speed branch circuit fault clearing ability and long term overcurrent protection
- Custom designs available



HDR designs and builds custom-engineered Power Supplies from our client's specifications, or sometimes, just their ideas. Space requirements, component replacements, UL and CSA certification requirements and design modifications are worked out quickly using our powerful CAD system.



# Engineering Consulting

Many of our clients come to us because we provide them with a valuable source of engineering expertise. Our engineers have more than 50 years of combined applications experience in power controls, power systems and power supplies. They have encountered and solved a variety of technical problems involving process power distribution, harmonics filtering and power factor correction. They have extensive background interfacing different types of controls and hardware with various process software and hardware. We invite you to call on them as your own personal consulting team.

Custom-engineered HDR Power Systems are built to your exact specifications and requirements. (including UL, CSA or other specified listing). A typical example is this 32-zone system for a glass forehearth melting application.



## Power Control Systems

- Glass Forehearth, Throat, Riser, Lehr Controls
- Infrared Heating
- Paint Drying Systems
- Coating
- Vacuum Deposition
- Silicon Carbide Power Systems
- Boiler Heating
- Paper Drying
- Heat Sealing and Packaging
- Designed and Built to UL, CSA and Individual Specifications
- VIPR Control-State of the Art Temperature Control for the Glass Industry
- Typical Specifications:
  - ◆ Voltages to 600 Vac, 50/60 HZ Single or Three Phase
  - ◆ Input/output Switchgear
  - ◆ NEMA 1 or NEMA 12 Enclosures
  - ◆ Convection or Forced-air Cooling
  - ◆ Multi-zone
  - ◆ Instrumentation



## Service and Technical Support 1-614-460-5338

Our Service and Technical Team is available to insure maximum uptime:

- 24/7 Service Support
- Preventative Maintenance Programs
- Start-Up
- Spare Parts
- Training

Discover the advantages of doing business with **AMETEK HDR Power Systems** for yourself.  
We want to be **your "Preferred Source."**