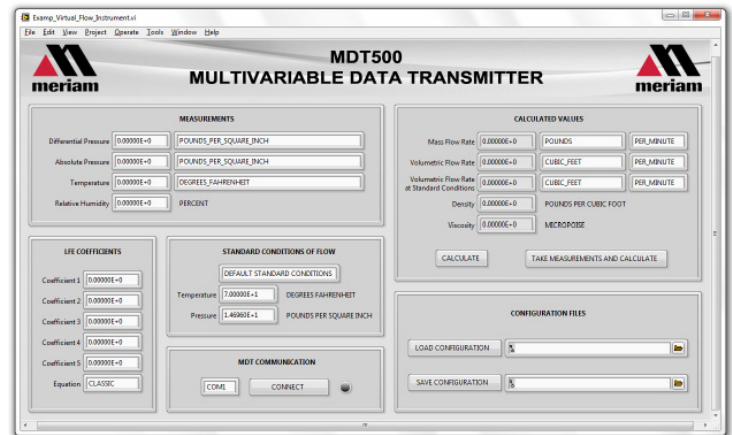




# MDT500 Multivariable Digital Transmitter

A Complete Flow Solution for Air and Gas Measurement



Screenshot of LabVIEW® Program (included)

MDT500 Mounted to Meriam 50MC Series LFE

## Impressive Accuracy In Less Time

- Flow rate accuracy of +/- 0.8% of Reading
- Response time of less than 0.1 seconds
- Flow rate calculations of 10 per second

## Pressure Measurement

### Optional Pressure Ranges

*Differential Sensor:*  
12 inches water column at 20°C

*Absolute Sensor:*

38 psia  
100 psia

### NIST Traceable Accuracy

*Differential:* ±0.05 % of full scale including all effects of linearity, repeatability, hysteresis, and temperature (-20°C to +50°C)  
*Absolute:* ± 0.025 % of full scale including all effects of linearity, repeatability, hysteresis, and temperature (-20 °C to 50 °C)

### Operating Temperature

-4°F to +122°F (-20°C to +50°C)

### Over Range Limits

*Differential Sensor:*  
2x range when pressurized on P1 (HI) side only; 150 psi when applied simultaneously to P1 (HI) & P2 (LO) sides  
*Absolute Sensor:*  
2x range

### Pressure Update Rate

7 readings per second from both differential and absolute pressure sensors

### Media Compatibility

*Differential Sensor:*  
Clean, dry, non-corrosive gases only (brass, 316 SS, Viton®, Silicon gel)  
*Absolute Sensor:*  
Media compatible with 316 SS

## Resistance/Temperature Measurement

### **NIST Traceable Accuracy**

± 1 °F including all effects of linearity, repeatability, hysteresis, and temperature with Pt100 Probe connected.

### **Operating Temperature**

-4°F to +122°F (-20°C to +50°C)

### **Temperature Update Rate**

14 readings per second

## Overall Technical Specifications

### **Material**

Base Plate is 6061-T6 Aluminum

### **Power**

USB: high power (500 mA) USB port or USB hub

### **Media Compatibility**

Clean, dry, non-corrosive gases only (brass, 316 SS, Viton, Silicon gel)

### **Connections**

Pressure: ¼" FNPT

Power & Communications: USB – receptacle type

Mini B

RTD: M12 Connector

### **Software**

Supported Operating Systems

Vista

Windows XP

Windows 7

### **Software Development Kit (SDK)**

Example Programs with Source Code in

LabVIEW® and C#

Supporting .NET (C# / VB)



## Temperature Sensor Specifications

### **Accuracy**

Class A Tolerance Class (per IEC 60751)

### **Temperature Range**

-58°F to 482°F (-50°C to 250°C)

Connector is 185°F (85°C Max)

### **Material**

316L Stainless Steel Sheath and Housing

### **Temperature Probe**

Pt100 (100 Ohms at 0°C, .00385 TCR (alpha))

### **Probe Dimensions**

¼" diameter, 6" long

### **Connection**

5 meter M12, molded cordset

## Enclosure Dimensions

### **Weight**

1.5 lbs. (Hook up fittings add .26 lbs.)

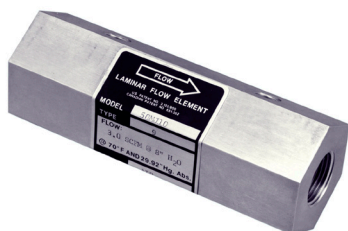
### **Height**

H x 2.6", W x 3.6", L x 5.6"

H x 66 mm, W x 91 mm, L x 142 mm

---

## Compatible with All Meriam Laminar Flow Element Models Including



Viton® is a registered trademark of DuPont

LabVIEW® is a registered trademark of National Instru-