

Chill-Out™ Combination Sensor

Overview

- Two sensors in one easily installed package: a solid state low temperature cut-out ("Freeze Stat") and an averaging resistance temperature sensor.
- Digital alarm signal to RTU, PLC or an electronic control; 24VAC-powered.
- Solid state design and rugged 3/8" diameter tubing eliminate concerns of gas leaks or kinking the capillary during installation.
- Mount in any direction — horizontal installation is not required.
- Easily formed aluminum or ultra flexible plenum-rated PVC coated galvanized steel armor sensor case.
- Relay and control circuitry self contained in rugged housing. Mounts on either side of enclosure with a locknut (included).
- Failure detection feature — relay changes state if power is lost
- 4 to 20 mA temperature loop output available with optional Temptran™ (ordered separately — see Section 4 for more information)

Specifications

Switching temperature: 38°F factory pre-set, user adjustable from 30°F to 44°F.

Accuracy: ±0.9°F (±0.5°C) typical.

Power requirement: 24V AC or DC.

Relay contact: User specified

Standard relay, SPDT (2" x 4" utility box)
 0.3 A at 125 VAC, Max. Voltage 125 VAC, or
 1A at 30 VDC, Max. Voltage 110 VDC

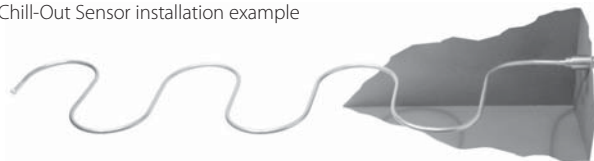
Optional power relay, DPST (4" x 4" utility box)

- 25 A at 277 VAC
- 25 A at 120 VAC
- 1 HP at 120 VAC
- 2 HP at 277 VAC

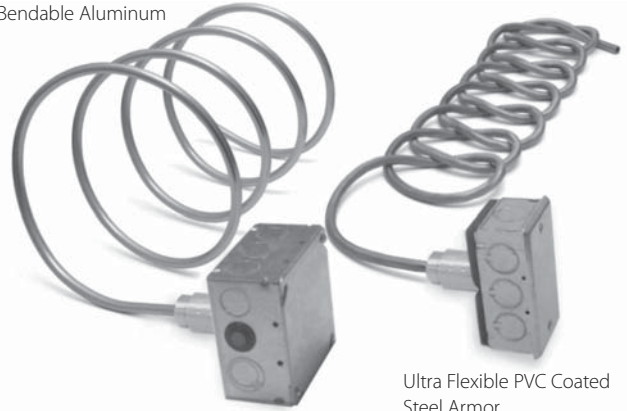
Sensor case length: 10 feet standard, lengths up to 50 feet available by special order.

Connection: AWG 18 leadwires.

Chill-Out Sensor installation example



Bendable Aluminum



Ultra Flexible PVC Coated Steel Armor

Specification and order options

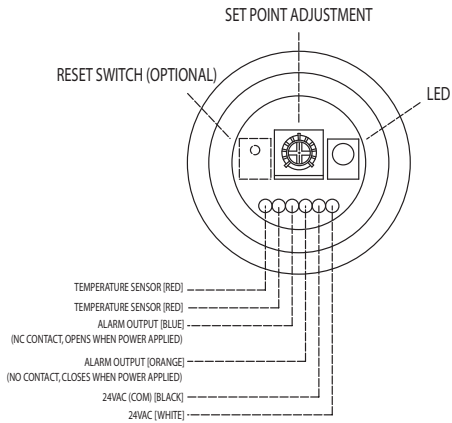
| | |
|---|--|
| ▼AS103759 | Model number |
| PF | Element Type: PF = 1000 Ω RTD (0.00385 Platinum) |
| 38 | Switching Temperature: ▼38°F Specify 30 to 44°F |
| E | Relay reset option: N = Non-latching (auto reset) ▼L = Latching (manual reset) ▼E = Latching (panel mounted reset) Note: option 'E' requires enclosure 'L' |
| 10 | Case length: 10 feet ▼: 10, 24, 50 |
| A | Case type: ▼A = Aluminum ▼B = PVC |
| 1 | Relay Rating: ▼1 = 0.3A ▼2 = 25A, VAC powered controller/coil 3 = 25A, VDC powered controller/coil Note: option 2 or 3 requires enclosure 'L' |
| L | Enclosure: N = No enclosure S = Standard utility box (2" x 4") ▼L = Large utility box (4" x 4") W = Weatherproof utility box (2" x 4") |
| AS103759PF38E10A1L = Sample part number | |

Order Replacement Relays

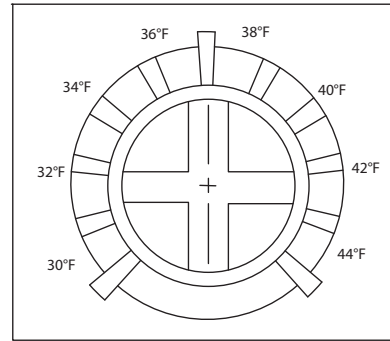
| Model number | External Relay |
|--------------|-------------------|
| AC103779 | 25A 24VAC Coil |
| AC103780 | 25A 24VDC Coil |

▼ = STANDARD OPTIONS
 Specifications subject to change

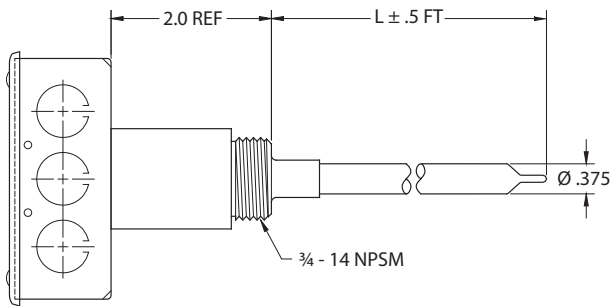
Chill-Out Sensor Interface



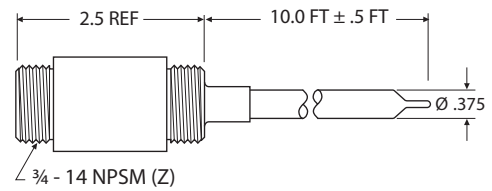
Setpoint Adjustment



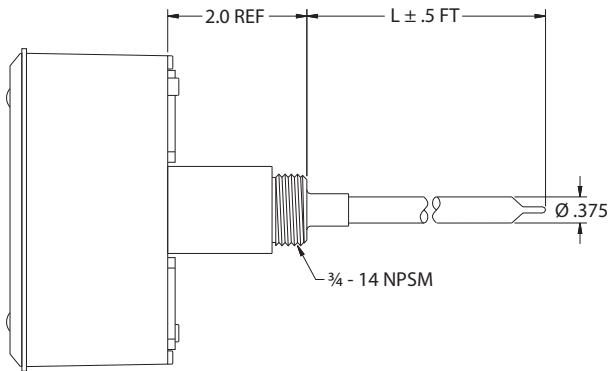
Standard and Large Utility Boxes



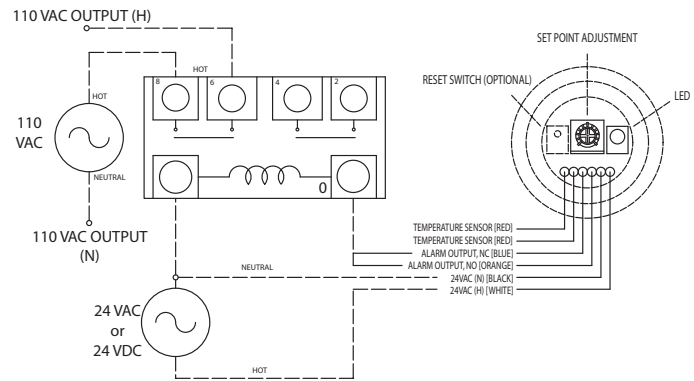
No Enclosure



Weatherproof Utility Box



Typical Installation with Relay



▼ = STANDARD OPTIONS
Specifications subject to change