

**API 008**  
8-pin socket

**API 008FS**  
8-pin finger-safe socket

**API 011**  
11-pin socket

**API 011FS**  
11-pin finger-safe socket

**8 and 11 Pin Sockets, Standard and Finger-Safe, Surface or DIN-Rail Mountable**

**ELECTRICAL RATING**

API 008 600 Volts, 10 Amps  
 API 008 FS, API 011, API 011 FS 300 Volts, 10 Amps

**CONSTRUCTION**

Contacts Brass, Nickel Plated  
 Screws Binder Head, 6-32 x 1/4" Steel Zinc Plated  
 Pressure Clamp, 6-32 x 5/16" Steel, Zinc Plated  
 Wire Range #12 to #22 AWG Solid or Stranded  
 Screws, FS Box Lug, M3 Steel, Nickel Plated  
 Maximum Wire Gauge #14 AWG  
 Molding Black Break-Resistant Thermoplastic

**AGENCY APPROVALS**

Standard Models UL recognized File No. E60008  
 FS models UL recognized File No. E113714  
 Standard Models CSA certified File No. LR29513  
 FS models CSA certified File No. LR26716  
 All Models CE

**SOCKETS**

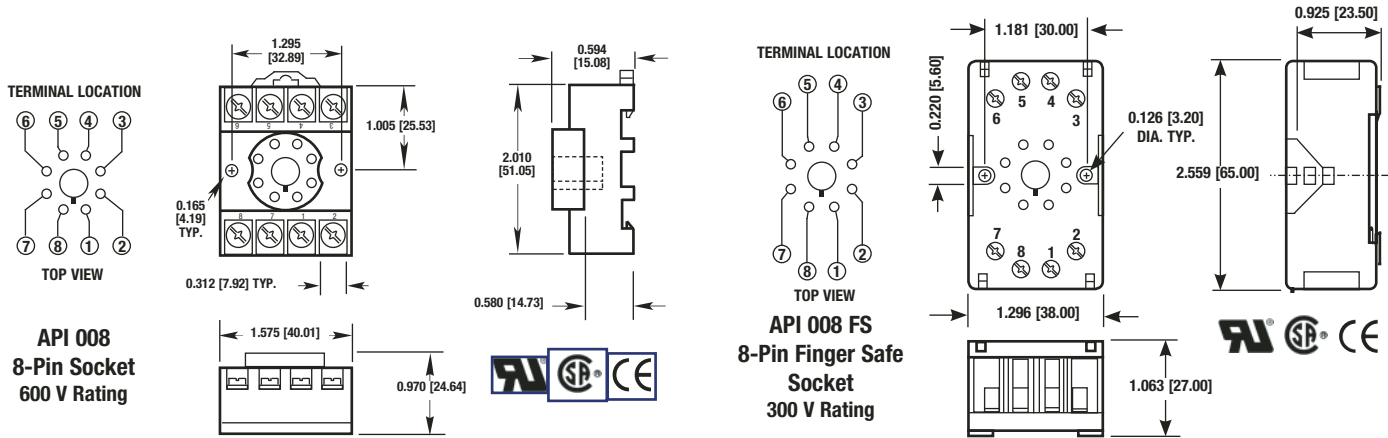
**API 008**  
**API 008 FS**  
**API 011**  
**API 011 FS**

**DESCRIPTION**

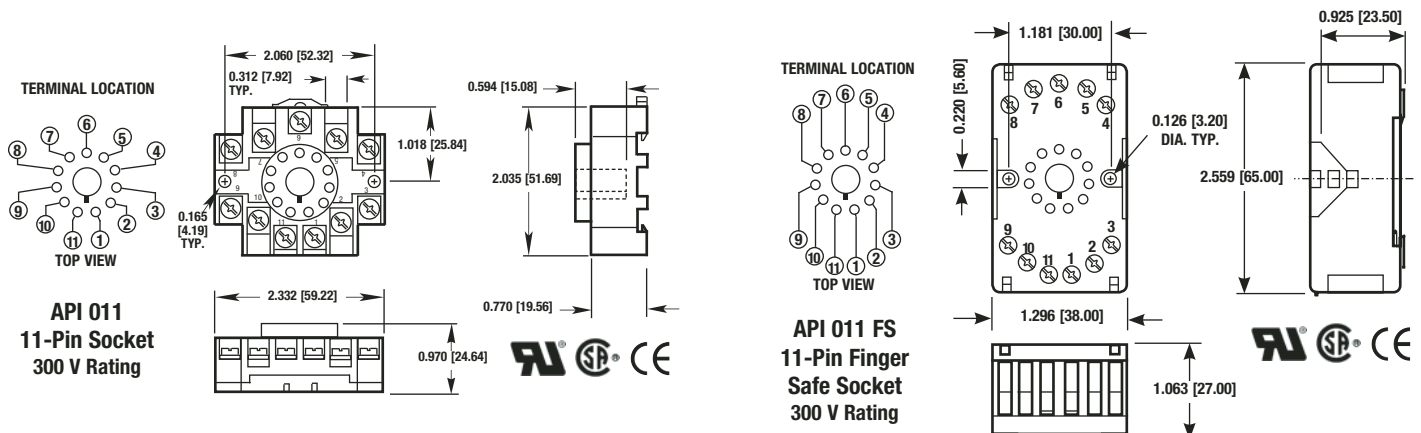
8 Pin Octal  
 8 Pin Octal, Finger Safe  
 11 Pin Octal Style  
 11 Pin Octal Style, Finger Safe



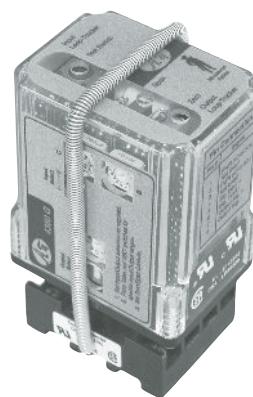
**API Sockets API 008 and API 008 FS**



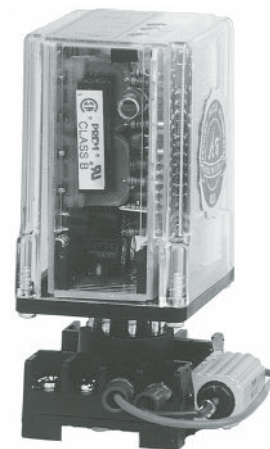
**API 011 and API 011 FS Sockets**



Model	Description
API 008	8-pin socket, DIN rail or surface mount
API 008-5A	8-pin socket, DIN rail or surface mount, with 5 A current shunt, 0.1 Ω 25W 1% shunt resistor
API 008 FS	8-pin socket, finger-safe, DIN rail or surface mount
API 011	11-pin socket, DIN rail or surface mount
API 011-5A	11-pin socket, DIN or surface mount, with 5 A current shunt, 0.1 Ω 25W 1% shunt resistor
API 011 FS	11-pin socket, finger-safe, DIN rail or surface mount
API CLP1	Hold-down spring for API 008, API 008 FS, API 011 or API 011 FS
API BP4	4-pin plug for DIN housing. Each

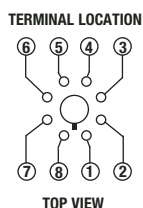


**API CLP1**  
Hold-down spring for API 008, API 008 FS, API 011 or API 011 FS sockets

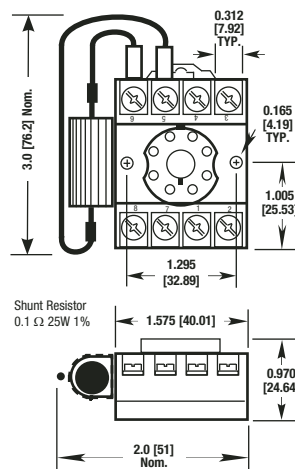


**API 008-5A**  
Socket with current shunt

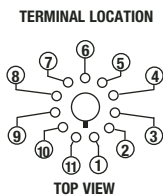
**API 008-05A Socket with Shunt**



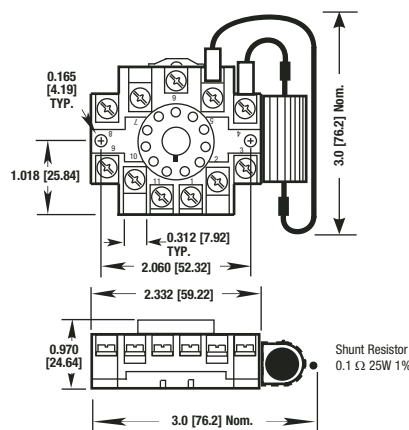
**API 008-5A**  
8-Pin Socket/Shunt  
600 V Rating



**API 011-05A Socket with Shunt**



**API 011-05A**  
11-Pin Socket/  
Shunt  
300 V Rating



API maintains a constant effort to upgrade and improve its products. Specifications are subject to change without notice. Consult factory for your specific requirements.