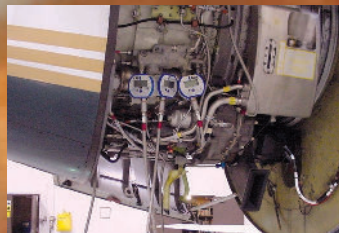


Cecomp Pressure and Temperature



*American Owned
American Engineered
American Built
American Pride*



**Cecomp
Electronics**



Div. of Absolute Process Instruments, Inc.
1220 American Way Phone: 800-942-0315
Libertyville, IL 60048 Fax: 800-949-7502

cecomp.com

Battery Powered Test Gauges

- ±0.25% Accuracy, 316L SS Sensor
- Proven Stability and Reliability
- Models with Selectable Units, Memory
- Digi-Max with Min/Max, Zero

- Portable and Rugged Test Gauge
- Auto Racing Tire Pressure
- Leak Down Testing
- ARM Replaces Mercury Manometers

Ranges

See range table for available engineering units
 Vacuum to 5000 psi, gauge, absolute, bipolar, compound
 ARM760: 760 Torr absolute

Accuracy

Standard: ±0.25% of full scale ±1 least significant digit
 Optional: HA ±0.1% FS ±1 LSD (most ranges)

Display

ARM760, DPG1000, F4 ranges to 1999
 3.5 digit LCD, 0.5" H digits

DPG1000, F4 ranges 2000-up, F16, F20, F22
 4 digit LCD, 0.5" H, 0.25" H alphanumeric lower display
 3 readings per second update rate
 BL: Red LED display backlight

Controls

ARM760, DPG1000, F4 ranges to 1999

Front button turns gauge on/off

DPG1000, F4 ranges 2000-up, F16

Front button turns gauge on/off, zeroes gauge

F20, F22

3 button keypad for operation and setup

Auto Shutoff

DPG1000, F4 ranges to 1999

Factory set to 5, 10, 30 minutes, or on/off

DPG1000, F4 ranges 2000-up

Factory set to any number of minutes or hours

F16, F20, F22

User settable to any number of minutes or hours

Batteries and Battery Life

Two AA alkaline

B: up to 2500 hours

BBL: approx. 150 to 1500 hours

Housings

Standard: 3.38" W x 2.88" H x 1.65" D

Aluminum case, plastic bezel, optional metal bezel

NEMA 4X: 3.5" W x 3.0" H x 2.0" D plastic case

Add approximately 0.75" to height for pressure fitting

Connection and Material

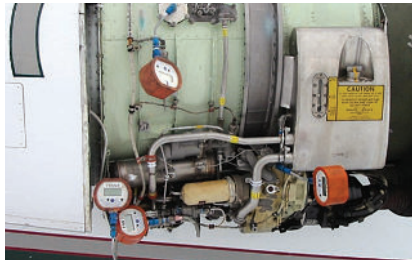
1/4" NPT male, 316L SS wetted parts

Environmental

Operating temperature: -4 to 185°F (-20 to 85°C)

Compensated temperature: 32 to 158°F (0 to 70°C)

Info Quick Link
cecomp.com/bat



Turbine Engine Gear Case Leak Down Testing



Fire Extinguisher Pressure Testing



F16BN, NEMA 4X



See Our New Heavy Duty Cases for Field Service Kits



Racing Tire Pressure



DPG1000B with RB Rubber Boot



F16B



F20, F22B with RB Rubber Boot

To Order

Model Series	Range	Auto Shutoff Time	Options
See table below	See range table	Default for F16, F20, F22	See options list

Model	Ranges	NEMA	Backlight	Keypad	Calibration	Units	Memory	Shutoff
ARM760B	760 Torr absolute			1 button on/off	Front zero and span pots.	Factory set	none	Factory set to 5 minutes
ARM760BBL			Red LED					
DPG1000B	Vacuum to 5000 psi, gauge, absolute, compound, bipolar			1 button on/off	Front zero and span pots.	Factory set	none	-5 5 min., factory set -10 10 min., factory set -30 30 min., factory set -ON on/off, factory set
DPG1000BBL			Red LED					
F4B			4X					
F4BBL			4X					
F16B	Vacuum to 5000 psi, gauge, absolute, compound, bipolar			1 button on/off, zero, cycle through min/max	Hold button at startup to zero, pass code protected calibration via internal buttons, zero, span, linearity	Internal button select	Min/max user configurable	Internal button select to desired minutes or hours or continuous on
F16BBL			Red LED					
F16BN			4X					
F16BNBL			4X					
F20B	Vacuum to 5000 psi, gauge, absolute, compound, bipolar			3 button on/off, zero/clear, ▼, ▲	Keypad zero button, pass code protected calibration via keypad, zero, span, linearity	Keypad select	-M4 4 max readings -M8 8 max readings	Keypad select to desired minutes or hours or continuous on
F20BBL			Red LED					
F20BN			4X					
F20BNBL			4X					
F22B	Vacuum to 5000 psi, gauge, absolute, compound, bipolar			3 button on/off, zero/clear, ▼, ▲	Keypad zero button, pass code protected calibration via keypad, zero, span, linearity	Keypad select	Min/max user configurable	Keypad select to desired minutes or hours or continuous on
F22BBL			Red LED					
F22BN			4X					
F22BNBL			4X					

Intrinsically Safe Portable Ruggedized Test Gauges

- ❑ Class I, Division 1, Groups A, B, C, D
- ❑ All Metal Housing
- ❑ Digi-Max® with Min/Max, Zero
- ❑ ±0.25% Accuracy, 316L SS Sensor

- Battery Powered Test Gauges
- Natural Gas Pipeline Pressures
- Aircraft Tire Pressure
- NEC Hazardous Areas

Agency Approval

Factory Mutual Approved
Intrinsically Safe for Class I, Division 1,
Groups, A, B, C, D Hazardous Locations

Info Quick Link
cecomp.com/is



Ranges and Resolution

See range table for ranges and engineering units.
Standard: Range, resolution, and units are factory set
D4: Selectable engineering units

Display

Standard: 3.5 digit LCD, 0.5" H
D4: 4 digit LCD, 0.5" H, 0.25" H alphanumeric lower
BL: Red LED display backlight
3 readings per second update rate

Accuracy

Standard: ±0.25% of full scale ±1 least significant digit
Optional: HA ±0.1% FS ±1 LSD (most ranges)

Batteries

Two AAA alkaline

Housing

Aluminum case and bezel
3.38" W x 2.88" H x 1.65" D
Add approximately 0.75" to height for pressure fitting

Connection and Material

¼" NPT male fitting
316L SS wetted parts

Environmental

Standard operating temp.: -40 to 185°F (-40 to 85°C)
D4 operating temperature: -4 to 185°F (-20 to 85°C)
Compensated temperature: 32 to 158°F (0 to 70°C)



DPG2000B with RB Rubber Boot



DPG2000B _-D4 with RB Rubber Boot



DPG2000B _-D4-Mx with RB Rubber Boot



Aircraft Tire Pressure



Honeywell TFE Jet Engine Testing



Natural Gas Distribution Pressure Test Kits



Industrial Gauge Manifold



Aircraft Strut Check

To Order				
Model Series	Range	Display-Memory	Auto Shutoff Time	Options

Model	Ranges	Keypad	Display	Backlight	Bat. Hrs.	Calibration	Units	Memory	Auto Shutoff
DPG2000B	Vacuum to 1999 psi, gauge, absolute, bipolar	1 button on/off	3.5 digit LCD, 0.5" H.	none	1000	Top zero and span pots.	Factory set	none	-5 5 min. factory set
DPG2000BBL				Hold button	150-1000				-10 10 min. factory set
DPG2000B _-D4	Vacuum to 5000 psi, gauge, absolute, compound, bipolar	1 button on/off/zero	4 digit LCD, 0.5" H and 5 character display	none	1000	Internal buttons, lockout switch, zero, span, linearity	Internal button select	Min/max	Internal button select for minutes, hours, or on/off
DPG2000BBL _-D4				1 minute	150-750				
DPG2000B _-D4-M1	Vacuum to 5000 psi, gauge, absolute, compound, bipolar	3 button on/off, zero/clear, memory ▼, ▲	4 digit LCD, 0.5" H and 5 character display	none	1000	Keypad zero button, pass code protected calibration via keypad internal lockout switch, zero, span, linearity	Keypad select	M1 continuous max rdg.	Keypad select for minutes, hours, or on/off
DPG2000BBL _-D4-M1				1 minute	150-750				
DPG2000B _-D4-M2				none	1000				
DPG2000BBL _-D4-M2				1 minute	150-750				
DPG2000B _-D4-M4				none	1000				
DPG2000BBL _-D4-M4				1 minute	150-750				
DPG2000B _-D4-M6				none	1000				
DPG2000BBL _-D4-M6				1 minute	150-750				
DPG2000B _-D4-M8	none	1000							
DPG2000BBL _-D4-M8	1 minute	150-750							

Low Voltage Powered Gauges

- ❑ Ideal for Permanent Installations
- ❑ 8-24 VAC or 9-32 VDC Input Power
- ❑ Digi-Max® with Min/Max, Zero
- ❑ ±0.25% Accuracy, 316L SS Sensor

- Plant Compressed Air Pressure
- Pneumatic Machinery Monitoring
- ARM Replaces Mercury Manometers
- Monitor Vacuum Pumps

Ranges

See range table for available engineering units

Standard: Range, resolution, and units are factory set

F16: Selectable engineering units

Accuracy

Standard: ±0.25% of full scale ±1 least significant digit

Optional: HA ±0.1% FS ±1 LSD (most ranges)

Display

DPG1000, F4 ranges to 1999, ARM760
3.5 digit LCD, 0.5" H digits

DPG1000, F4 ranges 2000-up, all F16

4 digit LCD, 0.5" H, 0.25" H alphanumeric lower display

3 readings per second nominal display update rate

BL: Red LED display backlight on when gauge is on

Controls

DPG1000, F4 ranges to 1999, ARM760

Front on/off button

DPG1000, F4 ranges 2000-up

Front on/off button, zeroes display at power-up

F16

Front button for zero at power-up, min/max functions

selectable engineering units via internal buttons

Power

AD: 8-24 VAC or 9-32 VDC, approx. 5 mA

ADBL: 8-24 VAC or 9-32 VDC, approx. 80 mA

ARM760: 115 VAC/12 VDC plug-in power supply included, 5 ft cable

2 wire, 3 ft long, 22 AWG cable

All models are designed for continuous operation

Housings

Standard: 3.38" W x 2.88" H x 1.65" D

Aluminum case, plastic bezel

NEMA 4X: 3.5" W x 3.0" H x 2.0" D plastic case

Add approximately 0.75" to height for pressure fitting and 1" to depth for strain relief

Connection and Material

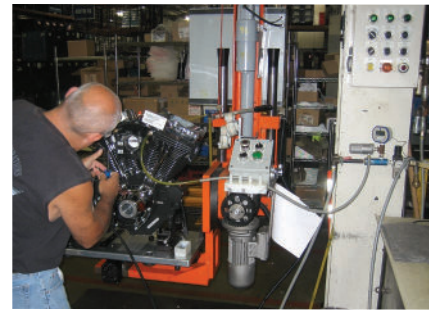
¼" NPT male, 316L SS wetted parts

Environmental

Operating temperature: -4 to 185°F (-20 to 85°C)

Compensated temperature: 32 to 158°F (0 to 70°C)

Info Quick Link
cecomp.com/ad



Engine Assembly Leak Down Testing



DPG1000AD



F4AD, NEMA 4X



F16AD



F16ADN NEMA 4X



ARM760AD



Pressure Regulator Testing

To Order		
Model Series	Range	Options
See table below	See range table	See options list

Model	Power	Ranges	NEMA	Backlight	Calibration	Units	Memory
ARM760AD	115V/12VDC included	760 Torr absolute			Front zero and span pots.	Factory set	none
ARM760ADBL				Red LED			
DPG1000AD	8-24 VAC or 9-32 VDC	Vacuum to 5000 psi, gauge, absolute, compound, bipolar			Front zero and span pots.	Factory set	none
DPG1000ADBL				Red LED			
F4AD				4X			
F4ADBL				4X			
F16AD	8-24 VAC or 9-32 VDC	Vacuum to 5000 psi, gauge, absolute, compound, bipolar			Hold button at startup to zero, pass code protected calibration via internal buttons, zero, span, linearity	Internal button select	Min/max, user configurable
F16ADBL				Red LED			
F16ADN				4X			
F16ADNBL				4X			

Pressure/Vacuum Transmitters

- Transmitters with Local Display
- 4-20 mA 2 Wire Loop Powered Models
- 4 Wire w. 4-20 mA or Voltage Output
- Output Test Function

- Pressure Input to PLC
- Tank Level Transmitter
- Pump Pressure Transmitter
- Pressure Transmitter to Datalogger

Ranges

See range table for available engineering units
Ranges and engineering units are factory set

Accuracy

Standard: $\pm 0.25\%$ of full scale ± 1 least significant digit
Optional: HA $\pm 0.1\%$ FS ± 1 LSD (most ranges)

Display

Ranges to 1999: DPG1000L, F4L, DPG1000DR, F4DR
3.5 digit LCD, 0.5" H digits
3 readings per second nominal display update rate
F16L, F16DR
4 digit LCD, 0.5" H, 0.25" H alphanumeric lower display
4 readings per second nominal display update rate
DRBL: Red LED display backlight on when gauge is on

Controls

Ranges to 1999: DPG1000L, F4L, DPG1000DR, F4DR
Output test button
F16L, F16DR
Output test, keypad setup

Power

L models: 8 to 32 VDC, powered by current loop
2 wire, 3 ft long, 22 AWG cable
DR models: 8 to 24 VAC 50/60 Hz or 9 to 32 VDC,
1.0 watt maximum. Use WMPSK power
supply kit to operate on 115 VAC
4 wire shielded, 3 ft long, 22 AWG cable
for power and output

All models are designed for continuous operation

Output

DPG1000L, F4L, DPG1000DR, F4DR
4-20 mA analog output, 50 milliseconds typical response
F16L
4-20 mA output, updated approx. 16 times per sec.
F16DR
Updated approximately 16 times per second
-I: Current output, 4-20 mA DC
-V: Voltage output, 0-2 VDC
-BV: Voltage output, ± 2 VDC

Housings

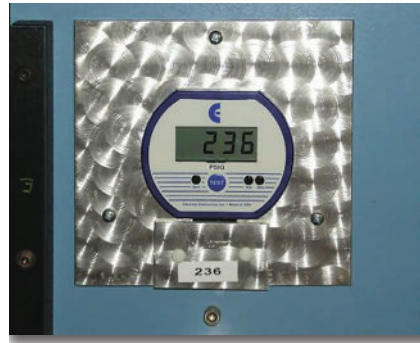
Standard: 3.38" W x 2.88" H x 1.65" D
Aluminum case, plastic bezel
NEMA 4X: 3.5" W x 3.0" H x 2.0" D plastic case
Add approximately 0.75" to height for pressure fitting
and 1" to depth for strain relief

Connection and Material

1/4" NPT male, 316L SS wetted parts

Environmental

Operating temperature: -4 to 185°F (-20 to 85°C)
Compensated temperature: 32 to 158°F (0 to 70°C)



Pipe Pressure Testing System

Info Quick Link
cecomp.com/trans



F4L
NEMA 4X



F16DR



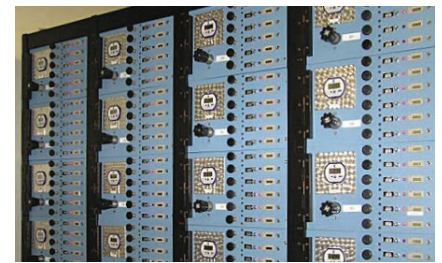
DPG1000L



F16L



F4DR,
NEMA 4X



Pipe Pressure Testing System

To Order

Model Series	Range	Analog Output Type	Options
See table below	See range table	Specify for DR models	See options list

Model	Power	Ranges	NEMA	Backlight	Calibration	Output Test	Analog Output
DPG1000L	8-32 VDC	Vacuum to 1999 psi, gauge, absolute, bipolar			Front zero and span pots.	Front pot. for test level	4-20 mA
F4L	2 wire loop-powered		4X				
F16L	8-32 VDC	Vac to 5000 psi, gauge absolute, compound, bipolar			Pass code protected calibration via keypad, zero, span, linearity	Keypad programmable test level	4-20 mA
F16LN	2 wire loop-powered		4X				
DPG1000DR							
DPG1000DRBL	8-24 VAC or 9-32 VDC	Vacuum to 1999 psi, gauge, absolute, bipolar		Red LED	Front zero and span pots.	Front pot. for test level	-I 4-20 mA -V 0-2 VDC -BV ± 2 VDC
F4DR			4X				
F4DRBL			4X	Red LED			
F16DR							
F16DRBL	8-24 VAC or 9-32 VDC	Vacuum to 5000 psi, gauge, absolute, compound, bipolar		Red LED	Pass code protected calibration via keypad, zero, span, linearity	Keypad programmable test level	-I 4-20 mA -V 0-2 VDC -BV ± 2 VDC
F16DRN			4X				
F16DRNBL			4X	Red LED			

Pressure/Vacuum Alarms, and Alarms with Retransmission Output

- ❑ Low Voltage AC/DC Powered
- ❑ 0.5 A Relays with Status LEDs
- ❑ Analog Output Available
- ❑ Output Test Function

Ranges and Resolution

See range table for available engineering units
Ranges and engineering units are factory set

Accuracy

Standard: $\pm 0.25\%$ of full scale ± 1 least significant digit
Optional: HA $\pm 0.1\%$ FS ± 1 LSD (most ranges)

Display

4 digit LCD, 0.5" H, 0.25" H alphanumeric lower display
4 readings per second nominal display update rate
BL models: Red LED backlight on when gauge is on.
LCD and bi-color (red/green) LED alarm indicators

Controls

Keypad to setup, configure, and display alarm trip points, acknowledge or toggle alarms

Alarm Outputs

Programmable dual form C (SPDT) relay contacts for HI/LO, HI/HI, LO/LO, normal or reverse acting with 1% deadband, or adjustable trip and reset points for each relay, manual or auto acknowledge.

1A/24VDC, 0.5A/115VAC, non-inductive

120 milliseconds typical response time

DAR Retransmission Output Options

- High or Low Pump Pressure Alarm
- Tank Level Monitor Plus Alarm
- Automated Leak-Down Testing
- Vacuum Pump Alarm

Updated approximately 16 times per second

-I: Current output, 4-20 mA DC

-V: Voltage output, 0-2 VDC

-BV: Voltage output, ± 2 VDC

Power

8 to 24 VAC 50/60 Hz or 9 to 32 VDC

Designed for continuous operation

Use WMPSK power supply kit to operate on 115 VAC

Housing

Standard: 3.38" W x 2.88" H x 1.65" D

Aluminum case, plastic bezel, front

NEMA 4X: 3.5" W x 3.0" H x 2.0" D plastic case

Add approximately 0.75" to height for pressure fitting and 1" to depth for strain relief

Connection and Material

1/4" NPT male, 316L SS wetted parts

Environmental

Operating temperature: -4 to 185°F (-20 to 85°C)

Compensated temperature: 32 to 158°F (0 to 70°C)



Substation Transformer Nitrogen Blanketing

Info Quick Link
cecomp.com/alarms



F16DAR

To Order			
Model Series	Range	Analog Output	Options
See table below	See range table	DAR models only	See options list

Model	Ranges	NEMA	Backlight	Calibration	Setup	Alarm Type and Options	Analog Output
F16ADA	Vacuum to 5000 psi, gauge, absolute, compound, bipolar			Pass code protected calibration via keypad, zero, span, linearity	Keypad programmable alarm configuration, setpoints, test level	2 SPDT relays, field programmable configuration, 1% deadband or adjustable hysteresis	none
F16ADABL			Red LED				
F16ADAN		4X					
F16ADANBL		4X	Red LED				
F16DAR	Vacuum to 5000 psi, gauge, absolute, compound, bipolar			Pass code protected calibration via keypad, zero, span, linearity	Keypad programmable alarm configuration, setpoints, test level	2 SPDT relays, field programmable configuration, 1% deadband or adjustable hysteresis	-I 4-20 mA -V 0-2 VDC -BV ± 2 VDC
F16DARBL			Red LED				
F16DARN		4X					
F16DARNBL		4X	Red LED				

Gauge Accessories and Options

Cases	Description
DPG-OK3	Orange Pelican® case. 11.8" x 8.8" x 5.2", holds 1 to 3 gauges with room for fittings
DPG-OK6	Orange Pelican® case. 16.7" x 11.2" x 6.1", holds 1 to 6 gauges with room for fittings
Accessories	Description
RB	Protective rubber boot, orange, not for NEMA models.
NC	NIST certificate; 5 test points, test date, NIST traceability documentation
CD	5 point factory calibration data with test date
SCR145S	Filter screen fitting keeps debris out of gauge sensor. 303 SS body, 100 micron 304 SS screen. Recommended for food vacuum packaging applications. Vacuum to 4000 psi.
CON145S	Quick connector allows installation or removal of gauge without tools. 304 stainless steel. Vacuum to 5000 psi
WMPSK	Wall mount power supply kit, 115VAC/12VDC. For AD, DR, and DAR series.
Options	Description—add option code to end of model number
-CC	Moisture resistant circuit board coating. Standard on DPG2000.
-HA	High accuracy, $\pm 0.1\%$ FS ± 1 LSD. Some ranges require 4 digit display. Not available with 3 psi sensor, compound, vacuum, or bipolar ranges.
-PM	Panel mount, 4.1" x 4.1", not for NEMA models.
-SM	Surface mount plate. Battery powered models only, not for NEMA models.
-MC	Metal bezel instead of plastic. Synthetic oil resistant. Std. on DPG2000, not for NEMA models.
-TP	Top gauge port. Battery-powered gauges only.
-CS	Case stiffener to reinforce bottom of case for tire pressure applications. Std. on DPG2000.



SCR145S
Screen



CON145S
Connector



-TP
Top Port



-PM
Panel Mount



-CS
Case Stiffener



WMPSK
Power Supply



NC
NIST Cert.



Pelican—Reg TM
Pelican Products, Inc.



RB Rubber Boot



DPG-OK6



DPG-OK3

Cecomp maintains a constant effort to upgrade and improve its products. Specifications are subject to change without notice. Consult factory for your specific requirements.

New Sanitary Gauges

- ❑ ±0.25% Accuracy
- ❑ 316L SS Wetted Parts
- ❑ 3-A Tri-Clamp® Style; 1", 1.5", 2", 3"
- ❑ NEMA 4X Rated
- ❑ Call Factory for Ordering Details

Ranges

Vacuum, absolute
Pressure: 0-15 to 0-300 psi in
any engineering units

Battery Powered

Battery powered
backlit display
2 AA batteries

Transmitter

Loop powered transmitter
Powered by 8 to 32 VDC
Other models available



Battery
Powered



Battery
Powered
Programmable



4-20 mA
Loop
Powered

3 psig	5 psig	15 psig	14.7 psig vacuum
-14.7 to 15 psig	15 psia	30 psia	30 psig
60 psig	100 psia	-14.7 to 100 psig	100 psig
-14.7 to 200 psig	200 psig	300 psig	Tri-Clamp—Reg TM Alfa Laval Inc.

ThermoPro® Temperature Indicators, Transmitters, Alarms

- ❑ Precision RTD Element
- ❑ NEMA 4X Housing
- ❑ 316L Stainless Steel Probe
- ❑ 1/2" NPT for Standard Thermowells

Range

-58.0 to 392.0°F or -50.0 to 200.0°C, selectable

Resolution

0.1°F or 0.1°C resolution

Accuracy

±0.1% of span, plus maximum sensor error of
±0.3°C at 0°C, ±1.1°C at 150°C

Sensor

100 Ohm RTD element, 0.00385 alpha coefficient
IEC-751 Class B
10 second time constant

Probe

316L SS sheath, 1/4" diameter
Fixed length probe: Welded to hex nipple
Spring-loaded probe: For use with thermowells

Display

4 readings per second nominal display update rate
4 digit LCD, 0.5" digit height, alphanumeric lower display

Housing

NEMA 4X plastic case
3.5" W x 3.0" H x 2.0" D for housing only

Connection and Probe Material

1/2" NPT male, 316L stainless steel

Operating Temperature

-4 to 185°F (-20 to 85°C) at housing

T16B Battery Powered Indicator

Includes 2 AA batteries

T16L Loop Powered Transmitter

Configurable 4-20 mA output, updated 4 times per sec.
3 ft long, 2-conductor 22 AWG cable

T16ADA Dual Temperature Alarm

2 SPDT relays, 1A/24VDC, 0.5A/115VAC
Programmable setpoints, High or Low alarms, alarm
action, hysteresis

3 ft long, 2-conductor and 6-conductor 22 AWG cables

- Local Temperature Display
- Refrigerator or Oven Temperatures
- Transmitter for PLC Temperature Input
- Temperature Out-of-Limits Alarm



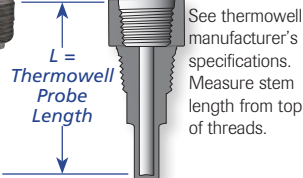
ThermoPro
T16B
Indicator



ThermoPro
T16L
Transmitter



ThermoPro
T16ADA
Alarm



Info Quick Link
cecomp.com/thermopro

Fixed Length Probe	Spring-Loaded for Thermowells	Length "L"	Features	Power
T16B2	T16B2S	2.5" L	Battery powered temperature indicator	2 AA batteries, 1000 hrs.
T16B4	T16B4S	4" L		
T16B6	T16B6S	6" L		
T16B9	T16B9S	9" L		
T16B12	T16B12S	12" L	Battery powered temperature indicator, with red LED display backlight	2 AA batteries, 150 to 750 hrs.
T16BBL2	T16BBL2S	2.5" L		
T16BBL4	T16BBL4S	4" L		
T16BBL6	T16BBL6S	6" L		
T16BBL9	T16BBL9S	9" L	2 wire 4-20 mA loop powered transmitter	8-32 VDC loop power
T16BBL12	T16BBL12S	12" L		
T16L2	T16L2S	2.5" L		
T16L4	T16L4S	4" L		
T16L6	T16L6S	6" L	Temperature alarm, 2 SPDT relays, programmable	8-24 VAC or 9-32 VDC
T16L9	T16L9S	9" L		
T16L12	T16L12S	12" L		
T16ADA2	T16ADA2S	2.5" L		
T16ADA4	T16ADA4S	4" L		
T16ADA6	T16ADA6S	6" L		
T16ADA9	T16ADA9S	9" L		
T16ADABL2	T16ADABL2S	2.5" L	Temperature alarm, 2 SPDT relays, programmable, with red LED display backlight	8-24 VAC or 9-32 VDC
T16ADABL4	T16ADABL4S	4" L		
T16ADABL6	T16ADABL6S	6" L		
T16ADABL9	T16ADABL9S	9" L		
T16ADABL12	T16ADABL12S	12" L		



Air Dryer Outlet Temperature



Ranges

Most engineering units are shown below. See price list or consult factory for additional or custom engineering units.

InHg/psig	Range Code	PSI
-29.9 inHg-15 psi	-30V15PSIG	-14.7-15.0
-29.9 inHg-100 psi	-30V100PSIG	-14.7-100
-29.9 inHg-200 psi	-30V200PSIG	-14.7-200
Pounds/sq. inch	Range Code	PSI
0-3 psi	3PSIG	3.0
0-5 psi	5PSIG	5.0
15-0 psia	15PSIA	15.0 abs
0-14.7 psi vac	15PSIGVAC	-14.7
-14.7-15.0 psi	±15PSIG	-14.7-15.0
0-15 psi	15PSIG	15.0
30-0 psia	30PSIA	30.0 abs
0-30 psi	30PSIG	30.0
0-60 psi	60PSIG	60.0
100-0 psia	100PSIA	100 abs
-14.7-100 psi	-15V100PSIG	-14.7-100
0-100 psi	100PSIG	100
-14.7-200 psi	-15V200PSIG	-14.7-200
0-200 psi	200PSIG	200
0-300 psi	300PSIG	300
0-500 psi	500PSIG	500
0-1000 psi	1000PSIG	1000
0-2000 psi	2000PSIG	2000
0-3000 psi	3000PSIG	3000
0-5000 psi	5000PSIG	5000
inches Hg (0°C)	Range Code	PSI
0-6 inHg	6INHGG	3.0
0-10 inHg	10INHGG	4.9
30-0 inHg abs	30INHGA	14.7 abs
0-29.9 inHg vac	30INHGVAC	-14.7
-29.9-30.0 inHg	±30INHGG	±14.7
0-30 inHg	30INHGG	14.7
60-0 inHg abs	60INHGA	29.5 abs
0-60 inHg	60INHGG	29.5
0-120 inHg	120INHGG	58.9
200-0 inHg abs	200INHGA	98.2 abs
0-200 inHg	200INHGG	98.2
-29.9-200 inHg	-30V200INHGG	-14.7-98.2
0-400 inHg	400INHGG	196
-29.9-400 inHg	-30V400INHGG	-14.7-196
0-600 inHg	600INHGG	295
0-1000 inHg	1000INHGG	491
Inches H ₂ O (20°C)	Range Code	PSI
0-85 inH ₂ O	85INH2OG	3.1
0-140 inH ₂ O	140INH2OG	5.1
400-0 inH ₂ O abs	400INH2OA	14.5 abs
0-408 inH ₂ O vac	400INH2OVAC	-14.7
±408 inH ₂ O	±400INH2OG	±14.7
0-400 inH ₂ O	400INH2OG	14.5
850-0 inH ₂ O abs	850INH2OA	30.7 abs
0-850 inH ₂ O	850INH2OG	30.7
Feet H ₂ O (20°C)	Range Code	PSI
0-7 ftH ₂ O	7FTH2O	3.0
0-12 ftH ₂ O	12FTH2O	5.2
0-35 ftH ₂ O	35FTH2O	15.2
0-70 ftH ₂ O	70FTH2O	30.3
0-140 ftH ₂ O	140FTH2O	60.7
0-230 ftH ₂ O	230FTH2O	99.7
0-480 ftH ₂ O	480FTH2O	208
0-700 ftH ₂ O	700FTH2O	303
0-1150 ftH ₂ O	1150FTH2O	498
0-2300 ftH ₂ O	2300FTH2O	995
0-4600 ftH ₂ O	4600FTH2O	1991
0-6900 ftH ₂ O	6900FTH2O	2986
Ounces/sq. inch	Range Code	PSI
0-50 oz/in ²	50ZING	3.1
0-80 oz/in ²	80ZING	5.0
240-0 oz/in ² abs	240ZINA	15.0 abs
0-235 oz/in ² vac	240ZINVAC	-14.7
-235-240 oz/in ²	±240ZING	-14.7-15.0
0-240 oz/in ²	240ZING	15.0
0-480 oz/in ² abs	480ZINA	30.0 abs
0-480 oz/in ²	480ZING	30.0
mm H ₂ O (20°C)	Range Code	PSI
0-2100 mmH ₂ O	2100MMH2OG	3.0
0-3500 mmH ₂ O	3500MMH2OG	5.0

3.5 digit display indicates up to 19.99, 199.9, or 1999. Some ranges may require models with 4 digit display.

cm H ₂ O (20°C)	Range Code	PSI
0-200 cmH ₂ O	200CMH2OG	2.8
0-210 cmH ₂ O	210CMH2OG	3.0
0-350 cmH ₂ O	350CMH2OG	5.0
1000-0 cmH ₂ O abs	1000CMH2OA	14.2 abs
0-1000 cmH ₂ O vac	1000CMH2OVAC	14.2 vac
±1000 cmH ₂ O	±1000CMH2OG	±14.2
0-1000 cmH ₂ O	1000CMH2OG	14.2
0-2000 cmH ₂ O	2000CMH2OG	28.4
0-2100 cmH ₂ O	2100CMH2OG	29.9
kiloPascals	Range Code	PSI
0-20 kPa	20KPAG	2.9
0-35 kPa	35KPAG	5.1
100-0 kPa abs	100KPAA	14.5 abs
0-101 kPa vac	100KPAVAC	-14.7
-101-100 kPa	±100KPAG	-14.7-14.5
0-100 kPa	100KPAG	14.5
200-0 kPa abs	200KPAA	29.0 abs
0-200 kPa	200KPAG	29.0
0-400 kPa	400KPAG	58
700-0 kPa abs	700KPAA	102 abs
-101-700 kPa	-100V700KPAG	-14.7-102
0-700 kPa	700KPAG	102
-101-1400 kPa	-100V1400KPAG	-14.7-203
0-1400 kPa	1400KPAG	203
0-2000 kPa	2000KPAG	290
0-3500 kPa	3500KPAG	508
0-7000 kPa	7000KPAG	1015
MegaPascal	Range Code	PSI
-0.1-1.4 MPa	-0.1V1.4MPAG	-14.7-203
0-1.4 MPa	1.4MPAG	203
0-2 MPa	2MPAG	290
0-3.5 MPa	3.5MPAG	508
0-7 MPa	7MPAG	1015
0-14 MPa	14MPAG	2031
0-20 MPa	20MPAG	2901
0-35 MPa	35MPAG	5076
Millibar	Range Code	PSI
0-200 mbar	200MBARG	2.9
0-350 mbar	350MBARG	5.1
1000-0 mbar abs	1000MBARA	14.5 abs
0-1013 mbar vac	1000MBARVAC	-14.7
-1013-1000 mbar	±1000MBARG	-14.7-14.5
0-1000 mbar	1000MBARG	14.5
2000-0 mbar abs	2000MBARA	29.0 abs
0-2000 mbar	2000MBARG	29.0
0-4000 mbar	4000MBARG	58.0
Bar	Range Code	PSI
1-0 bar abs	1BARA	14.5 abs
1.01 bar vac	1BARVAC	-14.7
-1.01-1 bar	±1BARG	-14.7-14.5
0-1 bar	1BARG	14.5
2-0 bar abs	2BARA	29.0 abs
0-2 bar	2BARG	29.0
0-4 bar	4BARG	58.0
7-0 bar abs	7BARA	102 abs
-1.01-7 bar	-1V7BARG	-14.7-102
0-7 bar	7BARG	102
-1.01-14 bar	-1V14BARG	-14.7-203
0-14 bar	14BARG	203
0-20 bar	20BARG	290
0-35 bar	35BARG	508
0-70 bar	70BARG	1015
0-140 bar	140BARG	2031
0-200 bar	200BARG	2901
0-350 bar	350BARG	5076
grams/cm ²	Range Code	PSI
0-200 g/cm ²	200GCMG	2.8
0-350 g/cm ²	350GCMG	5.0
1000-0 g/cm ² abs	1000GCMA	14.2 abs
0-1037 g/cm ² vac	1000GCMVAC	-14.7
0-1000 g/cm ²	1000GCMG	14.2
2000-0 g/cm ² abs	2000GCMA	28.4 abs
0-2000 g/cm ²	2000GCMG	28.4
2100-0 g/cm ² abs	2100GCMA	29.9 abs
0-2100 g/cm ²	2100GCMG	29.9

Minus sign optional for vacuum models. 15 psig, 100 psig, 200 psig, and absolute sensors are for vacuum service.

kilograms/cm ²	Range Code	PSI
1-0 kg/cm ² abs	1KGCMGA	14.2 abs
0-1.03 kg/cm ² vac	1KGCMGVAC	-14.7
-1.03-1 kg/cm ²	±1KGCMG	-14.7-14.2
0-1 kg/cm ²	1KGCMG	14.2
2-0 kg/cm ² abs	2KGCMGA	28.4 abs
0-2 kg/cm ²	2KGCMG	28.4
0-4 kg/cm ²	4KGCMG	56.9
7-0 kg/cm ² abs	7KGCMGA	99.6 abs
-1.03-7 kg/cm ²	-1V7KGCMG	-14.2-99.6
0-7 kg/cm ²	7KGCMG	99.6
-1.03-14 kg/cm ²	-1V14KGCMG	-14.2-199
0-14 kg/cm ²	14KGCMG	199
0-20 kg/cm ²	20KGCMG	284
0-35 kg/cm ²	35KGCMG	498
0-70 kg/cm ²	70KGCMG	996
0-140 kg/cm ²	140KGCMG	1991
0-200 kg/cm ²	200KGCMG	2845
0-350 kg/cm ²	350KGCMG	4978
mmHg (0°C)	Range Code	PSI
0-150 mmHg	150MMHGG	2.9
0-260 mmHg	260MMHGG	5.0
760-0 mmHg abs	760MMHGA	14.7 abs
0-760 mmHg vac	760MMHGVAC	-14.7
±760 mmHg	±760MMHGG	±14.7
0-760 mmHg	760MMHGG	14.7
1600-0 mmHg	1600MMHGA	30.9 abs
0-1600 mmHg	1600MMHGG	30.9
Torr (0°C)	Range Code	PSI
760-0 Torr	760TORRA	14.7 abs
1600-0 Torr	1600TORRA	30.9 abs
Atmospheres	Range Code	PSI
1-0 atm abs	1ATMA	14.7 abs
0-1 atm vac	1ATMVAC	-14.7
±1 atm	±1ATMG	±14.7
0-1 atm	1ATMG	14.7
0-2 atm abs	2ATMA	29.4 abs
0-2 atm	2ATMG	29.4
0-4 atm	4ATMG	58.8
-1-7 atm	-1V7ATMG	-14.7-103
0-7 atm	7ATMG	103
-1-14 atm	-1V14ATMG	-14.7-206
0-14 atm	14ATMG	206
0-20 atm	20ATMG	294
0-34 atm	34ATMG	500
0-70 atm	70ATMG	1029
0-135 atm	135ATMG	1984
0-200 atm	200ATMG	2939
0-340 atm	340ATMG	4997



RB Rubber Boot



-TP Top Port Option

